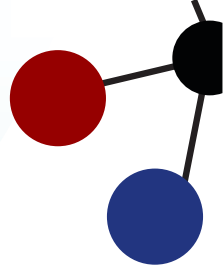


☆☆☆
17
Years

Researcher's Choice



eps[®]
Researcher's Choice

PRODUCT CATALOGUE
2026 - 2027




Manufacturer of

**LIFE SCIENCE RESEARCH
equipment**



www.epsbiosolutions.com

CERTIFICATIONS



Certificate of Registration

This is to certify that the Quality Management System of

EPS BIOSOLUTIONS

4, FLAT B, ANNAI ABODE, Chittibabu Nagar, 1st Cross Street, Pallikaranai, Chennai, Chengalpattu, Tamil Nadu, 600100

Has Been Successfully assessed & comply with the following standard

ISO 9001:2015


Scope of Certification

Manufacturing & Distributing of Scientific & Laboratory Equipments

Initial Issue Date : 21st November 2016*
Valid From : 21st November 2025
Valid To : 20th November 2026*

Certificate No : IAS/DND/4652

*Certificate is valid for three years (21st Nov 2025 to 20th Nov 2026) from the date of initial registration. Upon successful completion of the surveillance audit, a new certificate with an extended validity will be issued. For further clarification on the scope of this certification may be obtained by consulting the organization. This certificate is property of IAS and must be returned to IAS, upon cancellation.



Integrated Assessment Services, Website: www.iascertification.com, E-mail: info@iascertification.com, ph:+91-44-26142870



Certificate of Compliance

This is to certify that the Products & spores of class I according to the Life Science Research Equipment, directive 93/42/EEC manufactured by

NAME: EPS BIOSOLUTIONS
ADDRESS: PLOT 4, FLAT B, ANNAI ABODE APARTMENT, 1ST CROSS STREET, CHITTIHABU NAGAR, PALLIKARANAI, CHEMNAL TAMIL NADU - 600106, INDIA

PRODUCTS: SUPPLYING (BOROSILICATE) GEL ELECTROPHORESIS SYSTEM, 800 PAGE VERTICAL GEL ELECTROPHORESIS SYSTEM, 800 PAGE HORIZONTAL GEL ELECTROPHORESIS SYSTEM (STAIN), TRANSFER SYSTEM, ELECTROPHORESIS POWER SUPPLY, UV TRANSLILLUMINATOR, GEL DOCKER, GEL DOCUMENTATION SYSTEM, ORBITAL SHAKER FOR WORK FUNCTION, LAMINAR AIR FLOW, BIO SAFETY CABINET, FUME HOOD, SHAKER INCUBATOR, BACTERIOLOGICAL INCUBATOR, BIO- INCUBATOR, AUTO CLAVE, HOT AIR OVEN, HUMIDITY CHAMBER, MERRILL PUMPAGE, WATER BATH, ORBITAL INCUBATOR SHAKER, etc. (GIVE THE BRAND NAME I.E.P.S)

COMPLIES WITH THE REQUIREMENTS APPLICABLE TO:

The Certification Body has performed an independent audit of the above product, quality system covering the design, manufacture and final inspection of the certified product. The quality system has been assessed, approved and is subject to continuous surveillance according to the Life Science Research Equipment directive 93/42/EEC.

THIS CERTIFICATE IS ISSUED UNDER THE FOLLOWING CONDITIONS:

1. It applies only to the quality system as indicated in the manufacturing of above referenced models and it does not substitute the design or type examination procedure, if required.
2. The certificate remains valid until the manufacturing coverage of the quality systems is changed.
3. The certificate validity is conditioned by positive results of surveillance audits.
4. After fulfilling the relevant EU legislation, the manufacturer shall affix to each device, of the above referenced models.
5. The CE mark as shown below can be used, under the responsibility of the manufacturer, after consulting with an EC Declaration of conformity and compliance with all relevant EC Directives. The declaration is based on a single evaluation of one sample of above referenced product. It does not imply an assessment of the whole production.

Certification Calendar:
Certificate No: INCE1206302009
Registered on: 30.12.2022
Issued on: 30.12.2022
Expires on: 29.12.2025
1st Surveillance on/before: 29.12.2023
2nd Surveillance on/before: 29.12.2024

Executive Director
RADIANCE QUALITY CERTIFICATIONS
Regd Office - 20/22, Madhav Building, London W11 1UL, UK



Regd. Off: 20/22, Madhav Building, London W11 1UL, UK
Scope of conditions:
1. Validity of conditions is subject to the organization maintaining its system in accordance with respective management systems applicable with UK requirements.
2. The certificate remains in force until the quality system is changed or until the certificate expires.
3. The CE mark is to be used in accordance with the requirements of the CE mark.
4. The certificate is issued on the basis of a single evaluation of one sample of above referenced product. It does not imply an assessment of the whole production.
5. The certificate is issued on the basis of a single evaluation of one sample of above referenced product. It does not imply an assessment of the whole production.

भारत सरकार
Government of India
सूक्ष्म, लघु एवं मध्यम उद्यम विभाग
Ministry of Micro, Small and Medium Enterprises

MSME
महानि: लघु उद्यम विकास

UDYAM
REGISTRATION CERTIFICATE

Our small hands to make you LARGE

UDYAM REGISTRATION NUMBER	UDYAM-TN-02-0318376																				
NAME OF ENTERPRISE	MS EPS BIOSOLUTIONS																				
TYPE OF ENTERPRISE *	MICRO (Based on FY 2020-21)																				
MAJOR ACTIVITY	MANUFACTURING																				
SOCIAL CATEGORY OF ENTREPRENEUR	OBC																				
NAME OF UNIT(S)	EPB BIOSOLUTIONS Name of Unit(s)																				
OFFICIAL ADDRESS OF ENTERPRISE	<table border="1"> <tr> <th>Particulars</th> <th>Particulars</th> <th>Particulars</th> <th>Particulars</th> </tr> <tr> <td>Pin Code</td> <td>State</td> <td>Country</td> <td>Postal Code</td> </tr> <tr> <td>Block Name</td> <td>Town Name</td> <td>City</td> <td>District</td> </tr> <tr> <td>State</td> <td>TAMIL NADU</td> <td>CHENNAI</td> <td>600106</td> </tr> <tr> <td>Address</td> <td colspan="3">4, FLAT B, ANNAI ABODE, CHITTIHABU NAGAR, PALLIKARANAI, CHEMNAL TAMIL NADU - 600106, INDIA</td> </tr> </table>	Particulars	Particulars	Particulars	Particulars	Pin Code	State	Country	Postal Code	Block Name	Town Name	City	District	State	TAMIL NADU	CHENNAI	600106	Address	4, FLAT B, ANNAI ABODE, CHITTIHABU NAGAR, PALLIKARANAI, CHEMNAL TAMIL NADU - 600106, INDIA		
Particulars	Particulars	Particulars	Particulars																		
Pin Code	State	Country	Postal Code																		
Block Name	Town Name	City	District																		
State	TAMIL NADU	CHENNAI	600106																		
Address	4, FLAT B, ANNAI ABODE, CHITTIHABU NAGAR, PALLIKARANAI, CHEMNAL TAMIL NADU - 600106, INDIA																				
DATE OF INCORPORATION / REGISTRATION OF ENTERPRISE	18.12.2008																				
DATE OF COMMENCEMENT OF PRODUCTION	18.12.2008																				
NATIONAL INDUSTRY CLASSIFICATION CODE(S)	<table border="1"> <tr> <td>ISIC</td> <td>HSIC</td> <td>ISIC</td> <td>HSIC</td> </tr> <tr> <td>10</td> <td>20</td> <td>20</td> <td>20</td> </tr> </table>	ISIC	HSIC	ISIC	HSIC	10	20	20	20												
ISIC	HSIC	ISIC	HSIC																		
10	20	20	20																		
DATE OF UDYAM REGISTRATION	06/09/2018																				

* In case of partnership (registered) or other form of enterprise, the liability of the Government Scheme will be limited to the proportion of contribution (i.e. 50%) shared by the MSME.
This certificate is temporary, generated based on data of AY 2020-21. For an annual validity of data of AY 2021-22, this will be updated on receipt of data of AY 2021-22.
Disclaimer: This is a computer generated document. An applicant should check the details before using it for any purpose. For more details, visit: www.msme.gov.in

For any assistance, you may contact:

1. District Industries Centre (D.I.C.) - CHENNAI (TAMIL NADU)
2. MSME-UI - CHENNAI (TAMIL NADU)

BE A CHAMPION with the Ministry of MSME

Visit: www.msme.gov.in | www.dicmsme.com | www.chennai.msme.gov.in

Twitter: @msmeindia | Facebook: msmeindia | LinkedIn: msmeindia

शरीर अंकित - 2
Form No - 2

भारत सरकार
Government of India
सूक्ष्म, लघु एवं मध्यम उद्यम विभाग
Ministry of Micro, Small and Medium Enterprises

MSME
महानि: लघु उद्यम विकास

Trade Marks Registry
भारत ट्रेड मार्क रजिस्ट्रार
Trade Marks Act, 1999
भारत ट्रेड मार्क रजिस्ट्रार, 1999
Certificate of Registration of Trade Mark, Section 23 (2), Rule 56 (1)

भारत ट्रेड मार्क रजिस्ट्रार, 1999
Trade Mark No. 3936903
दिनांक: 06/09/2018
अनुसूची क्र. 1876

यदि आपका ट्रेड मार्क है जो कि आपका ट्रेड मार्क है, तो आप इसे अपने ट्रेड मार्क के रूप में उपयोग कर सकते हैं।
Certified that Trade Mark / a representation of a trademark, has been registered in the name of
EPS BIOSOLUTIONS, INDIA, RAJAKSHMI NAGAR APARTMENT, 8th CROSS STREET, RAJAKSHMI NAGAR, VELACHERY, CHENNAI
600 042, K. OCPUR, ANMVA, PARTNERSHIP FIRM (Partnership Firm)

In Class 9 Under No. 3936903 as of the date: 06 September 2018 in respect of

Goods and service as annexed

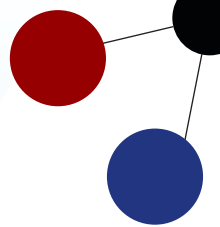
Trade Mark as annexed

यदि आपका ट्रेड मार्क है, तो आप इसे अपने ट्रेड मार्क के रूप में उपयोग कर सकते हैं।
Solely in my direction, the 04th day of April, 2019

भारत ट्रेड मार्क रजिस्ट्रार
Trade Marks Registry MUMBAI

भारत ट्रेड मार्क रजिस्ट्रार
Registrar of Trademarks





EPS Biosolutions, founded in 2008, specializes in manufacturing laboratory equipment tailored for the Life Science industry. Our brand, EPS, is renowned for a comprehensive range of products including Electrophoresis apparatus, Electrophoresis Power Supply, UV Trans-illuminators, Gel Documentation Systems, and Gel Rockers, among others.

We take pride in delivering products of the highest quality with a commitment to timely delivery and user-friendly service. To ensure widespread accessibility, we have established a robust network of dealers across all four regions of the nation. This network plays a crucial role in advancing our mission of "Excellence in Equipment" throughout the country.

A diverse array of industrial sectors, including educational institutions, pharmaceutical companies, research organizations, food and drug testing laboratories, diagnostic and aquaculture labs, as well as environmental and water treatment facilities.



Information Needed

When placing orders, please provide the following informations:

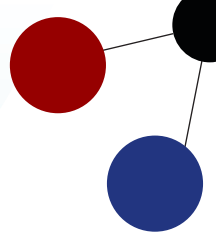
- Your billing and shipping address
- Your purchase order number
- product catalog number,description and quantity

Special Orders, Custom services and OEM

EPS provides custom orders and services. Many product can also be supplied in bulk and request a quotation for price and delivery information for bulk orders. Contact our corporate office for more information.

Warranty Information

All EPS products are guaranteed to meet the specifications listed in our catalog. Should a EPS product fail to meet specifications during its warranty period, it shall be repaired or replaced at EPS discretion. Generally equipments receive one year warranty coverage from the date of installation and shipment. Non EPS branded products are covered by the original equipment manufacturers warranty.



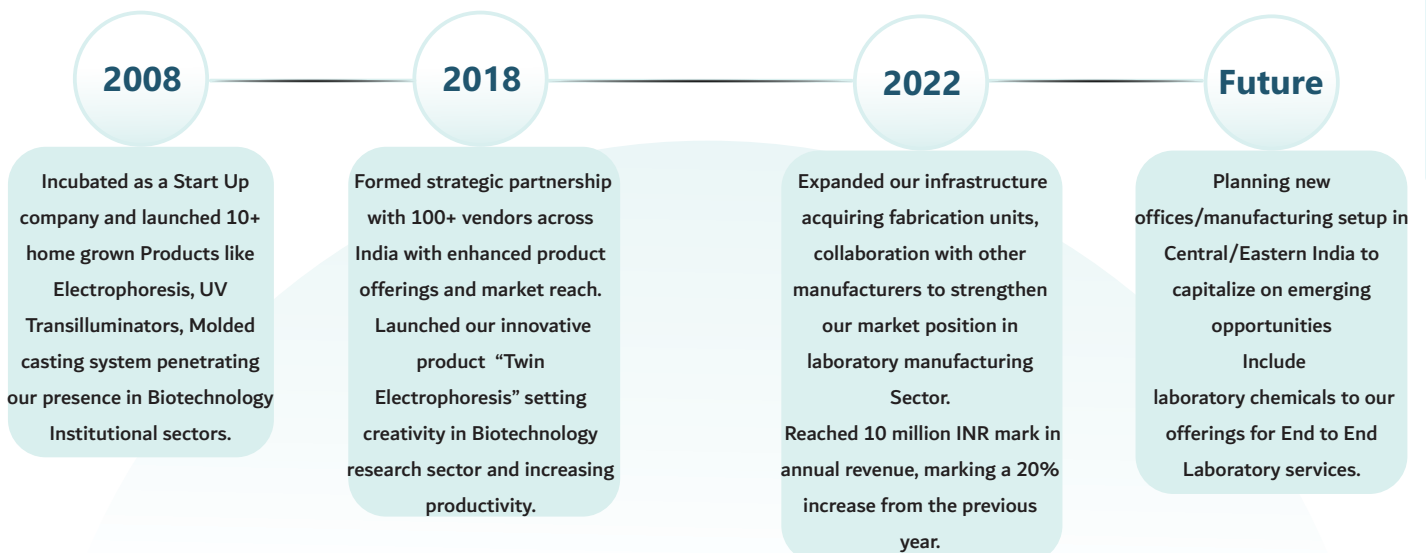
Mission

Our mission at EPS BioSolutions is to provide high-quality, innovative laboratory equipment and solutions that empower scientists and researchers to achieve breakthrough discoveries and advancements in various fields of study. We are dedicated to designing, manufacturing, and distributing state-of-the-art instruments that enhance efficiency, accuracy, and reliability in laboratory operations in India.

Vision

Our vision is to bring in cutting-edge technologies that elevate scientific research and discovery. We aim to champion 'Made in India' products as symbols of quality, innovation, and sustainability on the global stage and create breakthroughs in scientific advancements.

Milestones



OUR CLIENTS



आरोग्यम् सुख सम्पदा



Madras University

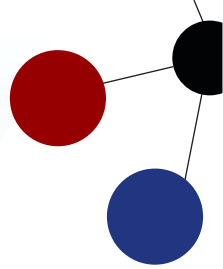


SRI RAMACHANDRA MEDICAL CENTRE



Tamil Nadu Pollution Control Board

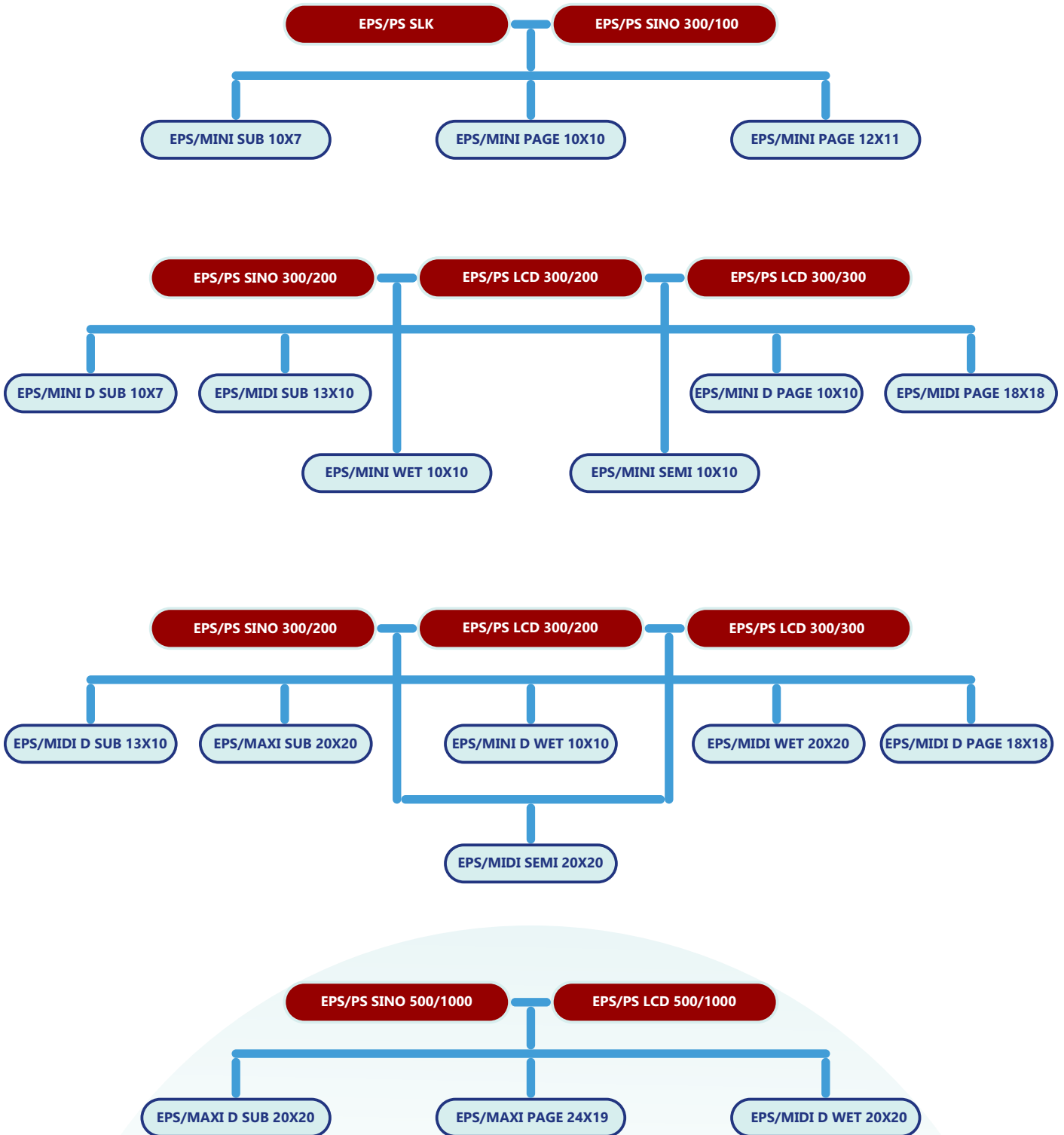




Products	Page
Product Selection Guide	7
Submarine Gel Electrophoresis (Basic/Advanced)	8
Submarine Gel Electrophoresis (Dual/Twin Dual)	9
Vertical Page Gel Electrophoresis	10
Immuno Gel Electrophoresis	11
Paper Electrophoresis	12
Western Blotting(Transfer)System	13
Semi Dry Blotter	14
Electrophoresis Power Supplies	15
Gel Rocker	17
UV Transilluminator	18
Gel Documentation System	19
(Orbital/Cooling/Incubator) Shaker	21
Dry Bath Incubator	23
PCR Work Station	24
Laminar Air Flow	25
Bio Safety Cabinet	27
Fume Hood	29
Auto Clave	30
Humidity Chamber	31
Bacteriological Incubator	33
Bod - Incubator	34
Hot Air Oven	35
Muffle Furnace	36
Water Bath	37
Ultra Low Temperature Deep Freezer	38
Other Products	39

ELECTROPHORESIS POWER SUPPLIES

PRODUCT SELECTION GUIDE



SUBMARINE GEL ELECTROPHORESIS

(BASIC/ADVANCED)

EPS horizontal gel electrophoresis offers many advantages for nucleic acid separation and remains today one of the mainstays of molecular biology. EPS range offers the most comprehensive and versatile range of horizontal gel electrophoresis units currently available for low- and high- through put DNA and RNA applications

Features

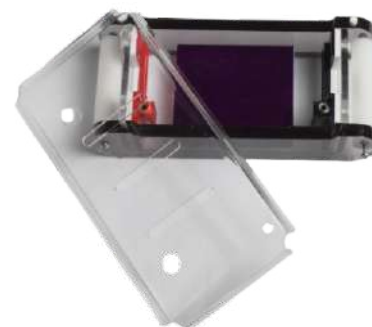
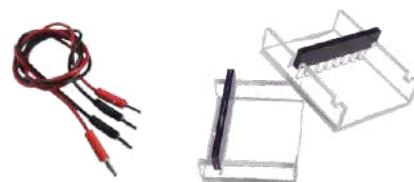
- Color-coded and height adjustable(optional) combs-easily identify comb thickness at a glance and control well depth
- Color background-for easy well detection when loading
- Compact tank-reduces the buffer volume
- Electrodes can be detachable and replaced by many times if needed
- UV-transparent running tray-allows the user to image the gel without risk of damage due to handling
- Side handles-for safe and easy transportation around the laboratory
- Silicon gasket for easy casting of gels (optional)

Complete Unit Includes

- Buffer tank with safety lid
- Electrodes (Positive and negative)
- Gel running tray, combs
- (Gel casting Assembly-Optional)
- Power cord
- User Guide



Submarine Gel Electrophoresis(Basic)



Submarine Gel Electrophoresis(Advanced)

Technical Specifications & Ordering Information

MODEL	EPS/MINI SUB 10X7	EPS/MIDI SUB 13X10	EPS/MAXI SUB 20X20	EPS/MINI ADV SUB 10X7	EPS/MIDI ADV SUB 13X10	EPS/MAXI ADV SUB 20X20
Buffer Capacity	300 ML	500 ML	900 ML	300 ML	500 ML	900 ML
Gel size(cm)	7X5 & 10X7	13X6 & 13X10	20X15 & 20X20	7X5 & 10X7	13X6 & 13X10	20X15 & 20X20
No. of wells	8	15&18	26&30	8	15&18	26&30
Max Samples	16	36	60	16	36	60
Electrode Diameter (mm)	0.2	0.2	0.2	0.3	0.3	0.3

Notes We also manufacture customized electrophoresis as per needs. (Run up to maximum 416 samples at a time)

SUBMARINE GEL ELECTROPHORESIS

(DUAL/TWIN DUAL)

EPS horizontal gel electrophoresis offers many advantages for nucleic acid separation and remains today one of the mainstays of molecular biology. EPS range offers the most comprehensive and versatile range of horizontal gel electrophoresis units currently available for low- and high- through put DNA and RNA applications

Features

- Color-coded and height adjustable(optional) combs-easily identify comb thickness at a glance and control well depth
- Can run upto 4 no.of gel running trays in a single time
- Color background-for easy well detection when loading
- Compact tank-reduces the buffer volume
- Electrodes can be detachable and replaced by many times if needed
- UV-transparent running tray-allows the user to image the gel without risk of damage due to handling
- Side handles-for safe and easy transportation around the laboratory

Complete Unit Includes

- Buffer tank with safety lid
- Electrodes (Positive and negative)
- Gel running tray, combs
- (Gel casting Assembly-Optional)
- Power cord
- User Guide



Submarine Gel Electrophoresis (Dual)



Submarine Gel Electrophoresis (Twin Dual)

Technical Specifications & Ordering Information

MODEL	EPS/MINI D SUB10X7	EPS/MIDI D SUB13X10	EPS/MAXI D SUB20X15	EPS/MAXI SUB 26X20 D-TWIN
Buffer Capacity	1.2 L	2 L	3.5 L	4 L
Gel size(cm)	7X5 & 10X7	13X6 & 13X10	20X15 & 20X20	26 & 20
No. of wells	8	15&18	26&30	26&51
Max Samples	32	72	120	816
Electrode Diameter (mm)	0.3	0.3	0.3	0.3

Notes We also manufacture customized electrophoresis as per needs. (Run up to maximum 416 samples at a time)

VERTICAL PAGE GEL ELECTROPHORESIS

EPS Vertical electrophoresis utilised potent protein and nucleic acid analytical tools for applications within all aspects of life science research, ranging from purity determination to analysis of complex protein lysates.

Features

- Glass plate size 24x19cm (maximum)
- Produce Straight lanes and sharp, well-defined bands
- Run up to two gels (maximum 40 samples) at one time under identical conditions.
- Run gels at uniform temperature from 1 to 45°C
- Glass Bond spacers (optional) gives leak proof casting
- Accommodates denaturing and native polyacrylamide gels
- A wide array of accessories allows you to tailor gel configurations to your needs
- Water re-circulation for all dual models

Complete Unit Includes

- Buffer tank with safety lid
- Electrodes (Positive and negative)
- Glass plates, Gel casting stand
- Teflon combs (Thickness 1mm and 1.5 mm)
- Glass supporter, clamper and screws
- Power cord
- User Guide



Technical Specifications & Ordering Information

MODEL	EPS/MINI PAGE 10X10	EPS/MINI PAGE 12X11	EPS/MIDI PAGE 18X18	EPS/MAXI PAGE 24X19	EPS/MINI D PAGE 10X10	EPS/MIDI D PAGE 18X18	EPS/MAXI D PAGE 24X19
Buffer Capacity	250 ML	280 ML	300 ML	1.2 L	2 L	3.5 L	3.5 L
Gel size(cm)	8X7	10X8	16X14	20X16	2(8X7)	2(16X14)	2(20X16)
No. of wells	7	10	13	20	7	13	20
Max Samples	7	10	13	20	14	26	40
Electrode Diameter (mm)	0.2	0.2	0.2	0.2	0.2	0.2	0.2

Notes We also manufacture customized electrophoresis as per needs. (Run up to maximum 60 samples at a time)

IMMUNO GEL ELECTROPHORESIS

Immuno Gel electrophoresis (IGE) is a laboratory technique that combines electrophoresis and immunoprecipitation to separate and identify proteins in complex mixtures, like blood serum. It's used to analyze antigen-antibody reactions, particularly for identifying and characterizing immunoglobulins and diagnosing immune-related disorders.



Features

- Compact tank-reduces the buffer volume
- Electrodes can be detachable and replaced by many time if needed
- Side handles-for safe and easy transportation around the laboratory

Complete Unit Includes

- Buffer tank with safety lid
- Electrodes (Positive and negative)
- Templates and Gel Punch
- Power cord
- User Guide

Technical Specifications & Ordering Information

MODEL	EPS/MINI IMMUNO	EPS/MIDI IMMUNO
Buffer Capacity	300 ML	500 ML
Templates	3	3
Electrode Diameter (mm)	0.2	0.2

PAPER ELECTROPHORESIS

Paper electrophoresis used to separate charged biomolecules (like amino acids, peptides and small proteins) on a strip of filter paper using an electric field. Instead of a gel, it uses paper as the supporting medium, typically Whatman filter paper.

Horizontal Paper Electrophoresis

- A strip of paper is laid flat (horizontally) across a support system
- The two ends of the paper dip into buffer reservoirs connected to electrodes
- Sample spots are applied near the center of the paper
- An electric field is applied, and molecules migrate toward the electrode of opposite charge.



Vertical Paper Electrophoresis

- The paper is suspended vertically between two buffer chambers
- The sample is applied at the top (or middle), and an electric field is applied vertically
- Molecules migrate downward or upward depending on their charge



Features

- Compact tank-reduces the buffer volume
- Electrodes can be detachable and replaced by many time if needed
- Side handles-for safe and easy transportation around the laboratory

Complete Unit Includes

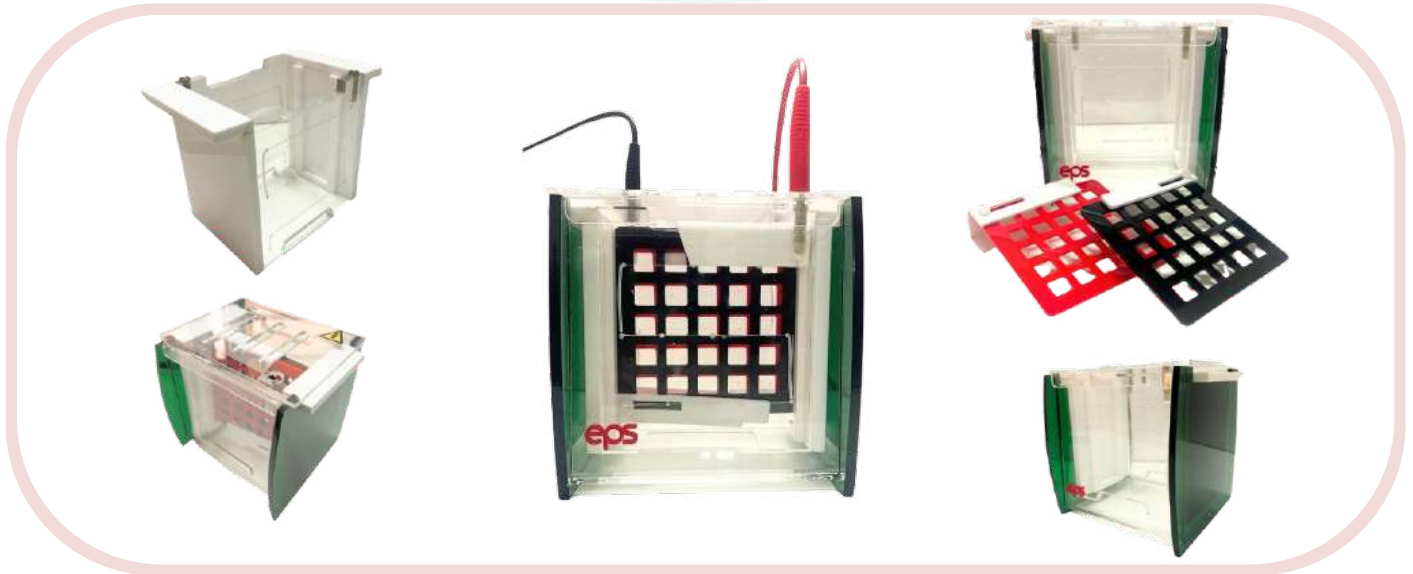
- Buffer tank with safety lid
- Electrodes (Positive and negative)
- Paper supporting frames
- Power cord
- User Guide

Technical Specifications & Ordering Information

MODEL	EPS/H-PAPER	EPS/MINI V-PAPER	EPS/MIDI V-PAPER
Buffer Capacity	500 ML	300 ML	500 ML
No of strips	6	2	3
Electrode Diameter (mm)	0.2	0.2	0.2

WESTERN BLOTTING (TRANSFER) SYSTEM

EPS Transfer apparatus entails immobilisation of proteins or nucleic acids on a solid membrane support, and then detection using a specific antibody or probe of complementary nucleic acid sequence, blotting significantly increases the potential for identification and characterisation of proteins and nucleic acids.



Features

- Transfer as many as two gels up to 16x14cm in less than an hour
- Uniform and strong electric field-supports efficient and even transfers
- Color-coded, easy to assemble and load cassettes-ensures proper orientation during transfer
- Superior tank design allows the cassettes to apply equal pressure across the stack-prevents gel distortion

Complete Unit Includes

- Buffer Chamber
- Safety Lid with High Voltage Leads
- Inbuilt Electrode Cassettes
- Foam Sponges
- Cassette Hook
- Power cord
- User Guide

Technical Specifications & Ordering Information

MODEL	EPS/MINI WET 10X10	EPS/MIDI WET 16X14	EPS/MINI D WET 10X10	EPS/MIDI D WET 16X14
Buffer Volume	300 ML	900 ML	700 ML	1200 ML
Gel size(cm)	8X7	16X14	8X7	16X14

SEMI DRY BLOTTER

EPS Transfer apparatus entails immobilisation of proteins or nucleic acids on a solid membrane support, and then detection using a specific antibody or probe of complementary nucleic acid sequence, blotting significantly increases the potential for identification and characterisation of proteins and nucleic acids.



Semi Dry Blotting(Basic)



Semi Dry Blotting(Advanced)

Features

- Transfer as many as two gels up to 16x14cm in less than an hour
- Uniform and strong electric field-supports efficient and even transfers
- Color-coded, easy to assemble and load cassettes-ensures proper orientation during transfer
- Superior tank design allows the cassettes to apply equal pressure across the stack-prevents gel distortion
- High polished graphite are incorporated for quick transfer for basis
- Platinum coated titanium anode plate electrode and stainless steel cathode plate for semi dry blotting (advanced)

Complete Unit Includes

- Buffer Chamber
- Safety Lid with High Voltage Leads
- Inbuilt Electrode Cassettes
- Foam Sponges
- Cassette Hook
- Power cord
- User Guide

Technical Specifications & Ordering Information

MODEL	EPS/MINI SEMI 10X10	EPS/MIDI SEMI 20X20	EPS/MINI SEMI ADV 10X10	EPS/MIDI SEMI ADV20X20
Buffer Capacity	50 ML	150 ML	50 ML	150 ML
Gel size(cm)	8X7	16X14	8X7	16X14

ELECTROPHORESIS POWER SUPPLIES

Power Supply is designed for electrophoresis and blotting techniques including large format and high throughput applications. The small footprint, large handle and simple operation make the Power supply easy to set up and use in your lab. With the large, easy to read LED&LCD, simply set the constant parameter, set the timer (if desired) and push start.



Single Output



Dual Output

SLEEK

Features

- Compact and Light weight
- Overload/ short-circuit protection
- MOC : single moulded ABS plastic enclosures for light weight and durability
- Suitable for Mini Agarose, SDS-PAGE, Paper, Immuno electrophoresis and blotting systems

Technical Specifications & Ordering Information

MODEL	EPS/PS SLK 100	EPS/PS SLK 200	EPS/PS SLK D 100	EPS/PS SLK D 200
DC Voltage	50,100,150,200,250			
Current	100mA	200mA	100mA	200mA
Control	Soft membrane key			
No. of output	Single, 4mm socket		Dual, 4mm socket	
Power	Single phase, 230V, 50Hz			

SINUSOIDAL

Features

- Compact and Light weight
- Auto restart on power failure
- No load/Over detect
- Seven segment display and Digital control
- Easy to use: Knob and membrane key
- Buzzer and real time process
- Overload/short - circuit protection
- MOC : single moulded ABS plastic enclosures for light weight and durability
- Suitable For Agarose, SDS-PAGE, Paper, Immuno electrophoresis and blotting systems



Technical Specifications & Ordering Information

MODEL	EPS/PS SINO 300/100	EPS/PS SINO 300/200	EPS/PS SINO 300/300	EPS/PS SINO 500/500	EPS/PS SINO 500/1000
DC Voltage	0 to 300 V	0 to 300 V	0 to 300 V	0 to 500 V	0 to 500 V
Current	0 to 100mA	0 to 200mA	0 to 300mA	0 to 500mA	0 to 1A
Timer	1 Min-9 hrs.59Min				
Display	4 Digits-Seven segment				
Resolution	1 V, 1mA, 1Min				
Parameters	Voltage, Current & Time				
Output	4 Parallel, 4mm socket				
Control	Knob Type				

LCD

Features

- Variable LCD model with a maximum upto 1000mA with safety fuse
- Constant voltage and constant current modes with auto balancing facility
- Programmable for 20 users depends on their applications
- Fine adjusting facility for setting the parameters
- Over load and short circuit protection
- Weight is around 2kg made up of injection molding ABS plastic enclosure
- Buzzer and memory option
- Auto restart set program in case of power failure
- Four output terminals



Technical Specifications & Ordering Information

MODEL	EPS/PS LCD 300/200	EPS/PS LCD 300/300	EPS/PS LCD 500/500	EPS/PS LCD 500/1000
DC Voltage	0 to 300 V	0 to 300 V	0 to 500 V	0 to 500 V
Current	0 to 200mA	0 to 300mA	0 to 500mA	0 to 1A
Timer	1 Min-9 hrs.59Min			
Display	LCD-16x2 Line			
Resolution	1 V, 1mA, 1Min			
Parameter Control	Manual/Program Mode			
Power	Single phase, 230V, 50Hz			
Output	3 Parallel, 4mm socket			
Weight	2kg			

GEL ROCKER

EPS offers advance technology Gel Rocker are known for their durability and Rockers are commonly used for staining and destaining gels after electrophoresis, hybridization, washing, blotting, Cell Culture and gentle mixing other chemical mixing procedures. (See-Saw Movement)

Features

- Variable oscillation model with maximum 60 oscillations per minute
- Fine adjusting facility for setting the parameters
- MOC : GI Steel treated and powder coated to prevent corrosion
- Maximum capacity can withstand upto 10 kgs
- Auto restart set program in case of power failure
- Timer-1 Min to 99 hr. 59 Min & Continues Mode
- User Guide



Technical Specifications & Ordering Information

Single type

MODEL	GR MONO	GR MONO LCD
Top platform in mm	250 x 250	250 x 250
Speed	0 to 60 Oscillation	0 to 60 Oscillation
Timer	Nil	1 Min to 99 hr. 59 Min & Continues Mode
Control	Knob	Soft Membrane key
Display	-	LCD (Timer and RPM)

Dual type

MODEL	GR TWIN	GR TWIN LCD
Top platform in mm	2 x (250 x 250)	2 x (250 x 250)
Speed	0 to 60 Oscillation	0 to 60 Oscillation
Timer	Nil	1 Min to 99 hr. 59 Min & Continues Mode
Control	Knob	Soft Membrane key
Display	-	LCD (Timer and RPM)

UV TRANSILLUMINATOR

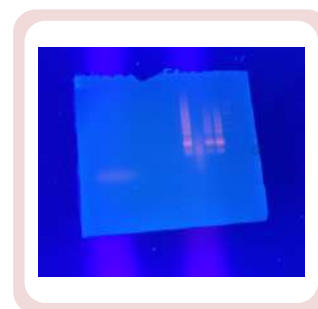
LUMINA high quality UV Transilluminators are designed for viewing DNA/RNA in agarose gels stained with ethidium bromide (EB) or other dyes.

LUMINA



Salient Features/USP

- Available with different range of wave lengths 254nm, 312nm and 360 nm
- The high intensity imported UV tubes are used for high illumination
- Imported UVG long-life filters are rated for 5000 hours of use
- The imported UV filter for high end models
- High/low intensity soft membrane key with LCD Display
- The cent percent UV resistant Polycarbonate shield for safety purpose
- The Nylon hinges provided with shield and open it as long as it can



Technical Specifications & Ordering Information

UV Model

MODEL	UV15365	UV15312	UV20365	UV20312	UV365A	UVD15	UVD20
Wavelength	365nm	312nm	365nm	312nm	365nm	365/312/254nm	365/312/254nm
Illumination Area (cm)	15x15	15x15	20x20	20x20	20x15	15x15	20x20
Light source	2(4x4) Watts	2(4x8) Watts	2(6x8) Watts	2(6x8) Watts	2(4x8) Watts	2(6x8) Watts	2(6x8) Watts
LCD Display	-	-	Optional	Optional	-	-	Optional
Exhaust fan	Yes						

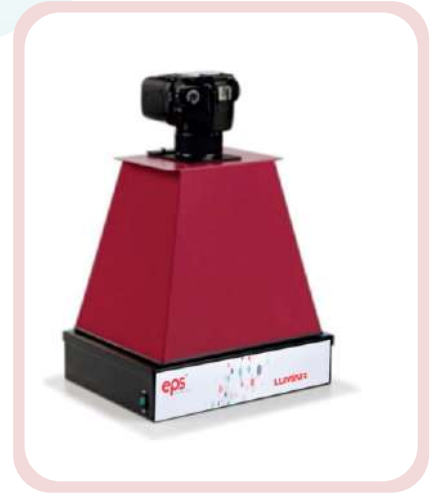
UV-VIS Model

MODEL	UVIS15365	UVIS15312	UVIS20365	UVIS20312	UVIS365A	UVIS15D	UVIS20D
Wavelength	365nm	312nm	365nm	312nm	365nm	365/312/254nm	365/312/254nm
Illumination Area (cm)	15x15	15x15	20x20	20x20	20x15	15x15	20x20
Light source	4x4 Watts	4x8 Watts	6x8 Watts	6x8 Watts	4x8 Watts	6x8 Watts	6x8 Watts
LCD Display	-	-	Optional	Optional	-	-	Optional
Exhaust fan	Yes						

GEL DOCUMENTATION SYSTEM

EPS Biosolutions offers a wide range of GEL Documentation Systems which are suitable for DNA and Protein quality images to suit for publication and research routine imaging or diagnostic needs.

LUMI SERIES



Features

- Budget friendly Gel Documentation System
- Digital Camera with high sensitivity CMOS sensor
- High Quality of excellent images
- Light weight Compact Hood
- Research grade single wavelength transilluminator
- Professional scientific Digital CMOS sensor to suit DNA and protein imaging
- Fully computer controlled darkroom

Applications

EPS offers a comprehensive range of imaging systems-ideal for image acquisition, visualization and documentation.

Technical Specifications & Ordering Information

MODEL	EPS/GDS/LUMI	EPS/GDS/LUMI- PRO
UV Wavelength	312nm	312nm
Epi White Light	None	Slim LED
Camera Type	Digital CMOS	Digital CMOS
Camera Resolutions	24.1 MP	24.1 MP
Imaging Area (cm)	15x15	15x15
Dark Room Hood	Compact Acrylic Mountable	Rust Proof Compact Powder Coated
Lens	Fixed Focus	Fixed Focus
Analysis Software	None	None
Input Voltage	230V 50HZ	230V 50HZ

ELITE SERIES

Features

- Professional quality images to suit for publications, research and routine imaging
- All models feature Epi white illumination using LED lights for uniform illuminations
- Special white trays are also available
- Professional scientific CCD/CMOS sensor to suit DNA and protein imaging
- UV safety switch. Auto UV cut on opening the dark hood
- All models feature Emission filter in the wavelength range 560-610nm, which is ideal for EtBr, SYBR Green Etc.



Applications

Application include Colorimetric, UV fluorescence, fluorescence, TLC imaging, Colonies, etc.

CHEMI SERIES

Features

- Two Stage peltier to cool CCD to -45 from ambient
- Exposure time settings Binning, Time-lapse capture mode, Dark frame subtraction, Background corrections, etc.,
- The model features interline CCD camera which increases the collection efficiency even for weak signals
- Most suitable for higher exposure times.
- Ultra low cooling for ultra read noise levels



Applications

Chemi Solo

- Chemiluminescence : with time lapse settings for bioluminescence, chemiluminescence, western blot, bio fluorescence

Chemi & Chemi pro

- Fluorescence DNA/RNA, Bioluminescence, Chemiluminescence Western Blot
- Bio fluorescence, Colorimetry, GFP, Multiplexing etc

Technical Specifications & Ordering Information

MODEL	EPS/GDS-ELITE	EPS/GDS - ELITE PRO	EPS/CHEMI - SOLO	EPS/CHEMI	EPS/CHEMI - PRO
UV Wavelength	300nm	302nm	302nm	302nm	302nm
Epi White Light	Slim LED	Slim LED	Slim LED	Slim LED	Slim LED
Camera Type-CCD	Non Cooled	Non Cooled	Peltier Cooled	Peltier Cooled	2 Stage Peltier Cooled
Camera Resolution	4.0 MP	5.0 MP	4.2 MP	4.2 MP	8.4 MP
Imaging Area (cm)	17x13	20x20	17x13	17x13	20x20
Lens	Fixed Focus	Manual	Fixed Focus	Fixed Focus	Manual
Analysis Software	1D Analysis	1D Analysis	1D Analysis	1D Analysis	1D Analysis
Input Voltage	230V 50HZ	230V 50HZ	230V 50HZ	230V 50HZ	230V 50HZ

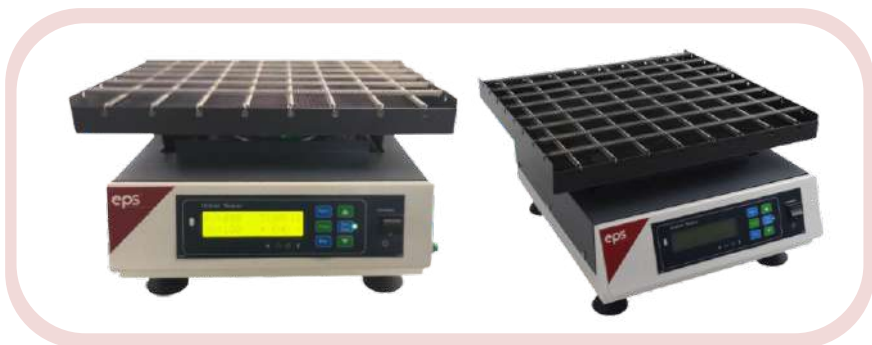
(ORBITAL/COOLING/INCUBATOR) SHAKER

EPS offers advance technology Orbital Lab Shakers are known for their durability and rotary swirling action used extensively in tissue culture work, Aeration of fermentations and various other chemical mixing procedures. EPS Series Orbital Shakers are built for continuous duty. If you need a specific solution (Heavy Duty Large Volume Mixing) and OEM builds, EPS has the ability to manufacture the solution, Step by Step RPM acceleration on Start & Stop.

ORBITAL SHAKER

Features

- Android mobile app control (RPM & Timer)
- Bluetooth-app access distance 15 to 20 mtr
- Universal flask holder with SS springs
- Auto restart (on power failure)
- Square type tray
- Safety fuse and short circuit protection



Technical Specifications & Ordering Information

MODEL	EPS/OS/ANLG	EPS/OS/LCD
Flask Holder	Spring loaded (SS)	Spring loaded (SS)
Platform Size	385x380	385x380
Capacity	16x250ml	16x250ml
Speed	50 to 250 RPM	50 to 250 RPM
Timer	Nil	1 Min to 99 hr.59 Min & Continues Mode

(COOLING/INCUBATOR) SHAKER

EPS offers advance technology Orbital Incubator Shakers are known for their durability and rotary swirling action used extensively in tissue culture work, Aeration of fermentations and various other chemical mixing procedures. EPS Series Orbital Shakers are built for continuous duty with Air Circulation Fan, Step by Step RPM acceleration on Start & Stop.

CONSTRUCTION

The outer body is made of 1.2 mm thick GI steel which is pre-treated for corrosion and then powder coated to years of new look, to provide an exceptional uniformity (+/- 2° of the set value) inside the chamber, a powerful circulating fan is provided. This is mounted either at the back or the top depending on space constraints.



The heart of the system is a customized, microprocessor based electronic temperature controller. It has a digital display and soft touch keys for various functions. A special soft key on the front panel enables the user to easily calibrate the display value to any standard thermometer. Our controllers use a suitable capacity thyristor pack with an electronic relay that obviates the use of mechanical or solid state relays thus providing an exceptional temperature control. The temperatures are controlled to within $\pm 2^\circ$ of the set value.

Technical Specifications

PARAMETER	DESCRIPTION
Body	Inner : Stainless Steel (S.S) Outer : GI Steel treated and Powder coated to prevent corrosion
Heater Capacity	500 watts
Controller	Fully Microprocessor controlled temperature, RPM and time controller with soft touch keys.
Temperature Sensor	PT 100 (platinum RTD Sensor) with SS sheathing
Temperature Display and setting	Seven Segment display
Timer	1 Min to 99 hr.59 Min & Continues Mode
RPM & Time Display	LCD display
RPM Resolution	+/- 2 RPM
Relay	SSR Relay with Electronic Control
Motor Speed	50 - 250 RPM, continuously variable
Speed Control	Soft Touch - Digital PID Control
Movement Range	25 mm Orbital motion
Motor	Solid - state brushless DC motor with maintenance free ball bearings
Memory	20 Read/Writable Program (RPM & Time)
Input Power	230V AC

Ordering Information For Incubator Orbital Shaker

MODEL	EPS/IOS/300	EPS/IOS/400	EPS/IOS/500
Chamber size (mm)	300x300x300	380x380x450	450x450x450
Capacity	250 mlx6	250mlx9	250 ml x16
Temperature Range	Ambient +5°C to 60°C		
Temperature Resolution	$\pm 1^\circ\text{C}$ to $\pm 3^\circ\text{C}$		

Ordering Information For Cooling Incubator Orbital Shaker

MODEL	EPS/CIOS/300	EPS/CIOS/400	EPS/CIOS/500
Chamber size (mm)	300x300x300	380x380x450	450x450x450
Capacity	250 mlx6	250mlx9	250 ml x16
Temperature Range	+10°C to 60°C		
Temperature Resolution	$\pm 1^\circ\text{C}$ to $\pm 3^\circ\text{C}$		

DRY BATH INCUBATOR

EPS Digital Dry Baths offer digital control over both temperature and time, eliminating the need for an external thermometer or timer. Available in three configurations, the digital dry baths offer capacity for up to four blocks.

The cavities within the high-grade aluminium blocks are precision machined to match the conical size and shapes of 0.5, 1.5, 2.0, 15 and 50ml tube sizes, providing unsurpassed temperature uniformity. All model includes a convenient block lifer for transferring blocks with high temperatures.



Features

- Compact and aesthetic appearance
- Exchangeable blocks, for tube sizes 0.2 to 50ml
- Digital temperature - PID Control
- Block lifter for easy transferring
- Optional Blocks 15 & 50 ml

Technical Specifications & Ordering Information

MODEL	EPS/DB/001	EPS/DB-T/002	EPS/DBD-T/003	EPS/DBD-T/004
Tube Size	1.5ml/2ml	1.5ml/2ml	1.5ml/2ml	1.5ml/2ml
No of Blocks	1	1	2	4
No of Samples	24	24	48	96
Sensor (Width)	PT 100	PT 100	PT 100	PT 100
Timer	-	999 minutes	999 minutes	999 minutes
Temp.Controller	PID Temp controller (up Controlled)	PID Temp controller (up Controlled)	PID Temp controller (up Controlled)	PID Temp controller (up Controlled)
Temp Range	Ambient +5°C to 100°C	Ambient +5°C to 100°C	Ambient +5°C to 100°C	Ambient +5°C to 100°C
Heater Control	SSR Relay	SSR Relay	SSR Relay	SSR Relay

PCR WORK STATION

EPS offers PCR work station which has self-contained work area that will help protect your PCR runs against contamination. UV bulbs irradiate the work area prior to use, reducing the possibility that contaminating DNA will be amplified. Containment features reduce the chance of airborne contamination. The non-ventilated hood has acrylic windows for a clear view, an acid-resistant SS work surface.

PCR amplification is extremely sensitive to contamination, prevention of contamination requires good laboratory practices to minimize external or cross-contamination during reagent and sample preparation.

Applications

- Medicine
- Environment Study
- Crime Scene Investigation

Construction

- MS power coated with Stainless Steel Working Top
- Door : PC Sheet for UV Resistance
- Power Socket Optional



Technical Specifications & Ordering Information

MODEL	EPS/PCR/600W	EPS/PCR/900W	EPS/PCR/1200W
Chamber size (feet)LxDXH	2'x2'x2.5'	3'x2'x2.5'	4'x2'x2.5'
UV source	1x15 watts	1x15 watts	2x15 watts
Wavelength	254 nm	254 nm	254 nm
Florescent lamp	1x8 watts	2x8 watts	2x8 watts
Pipet Holder	5 placings	5 placings	5 placings
Timer	Optional	Optional	Optional
Power	230V AC, 50Hz	230V AC, 50Hz	230V AC, 50Hz

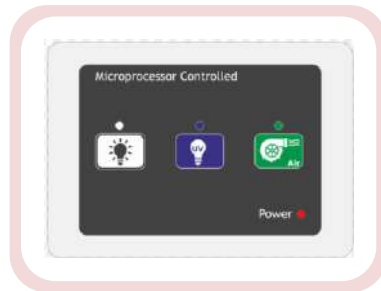
LAMINAR AIR FLOW

EPS Laminar Air Flow are the premium selection for the discerning researcher, offering a combination of value, high quality construction, low operating noise levels, and a wide product range to suit all budgets from the Research and Industry leader.

Features

- The blower system maintains airflow as the filter becomes loaded, ensuring optimum efficiency and product protection
- EPS products are manufactured for the most demanding laboratory applications
- All components are designed for maximum chemical resistance and enhanced durability for a long service life
- Each Laminar Air Flow is individually factory tested for safety and performance in accordance with standards

Controller (optional)



Horizontal & Vertical Models

EPS Laminar Air Flow - available in both horizontal and vertical flow models, air is taken in from above the cabinet and passed through a HEPA filter

Blower System Direct drive, continuous duty 1/4 HP with sealed bearings motors selected for energy efficiency, compact design, and flat profile. completely integrated assembly optimizes motor cooling. All rotating parts balanced for smooth, quiet and vibration-free operation.

Pre Filter System Washable type pleated pre-filter with 90% efficiency is provided.

HEPA Filtration System Aluminium framed High efficiency particular air (HEPA) filter operate a typical efficiency of 99.97% at 0.3 micron size, provides superior product protection.

User Interface An angled front, curved work surface front edge and glass sides promote ergonomics. The vertical air flow design minimizes direct airflow which may lead to dry eyes and fatigue on horizontal flow models.

Material of construction EPS Models available in laminated finish / 18 gauge Mild steel (MS) material with working area SS non corrosive material

Control Panel Switch controls for blower, light, outlet and UV are easy to clean and allow air flow to be monitored more accurately.

Product Protection Horizontal/Vertical laminar air flow with HEPA filtration, 99.97% at 0.3 micron size, provides superior product protection.

Air Flow 90FPM (0.45 m/s) 10 FPM (0.05 m/s) average velocity measured 6 inches (152.4 mm) from the diffuser screen. Uniformity 20% of average or better 20 to 100 FPM. Compared with horizontal flow models, vertical flow clean benches generate less turbulence when large instruments or items are placed in the work zone.

Special Features

- Provided with flexible/right clear side screens
- Can be designed to any size to suit site requirement

Applications

- Research laboratories
- Production machinery
- Micro Electronics
- Food Processing industries
- Filling line process
- Pharmaceutical sealing
- Packaging industries

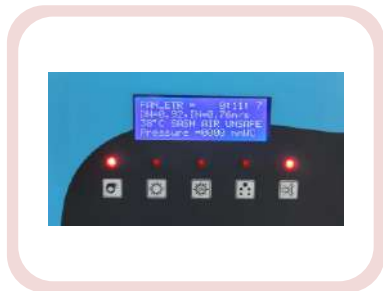
Technical Specifications & Ordering Information

MODEL	INNER WORKING SIZE (MM)	OVERALL DIMENSION IN MM (LXDXH)	MATERIAL OF CONSTRUCTION		
			INNER	OUTER	OPTIONAL
EPS/LAF-H600	2'X2'X2'	660X840X1740	SS	MS	FULLY SS
EPS/LAF-H900	3'X2'X2'	960X840X1740	SS	MS	FULLY SS
EPS/LAF-H1200	4'X2'X2'	1260X840X1740	SS	MS	FULLY SS
EPS/LAF-V600	2'X2'X2'	660X780X1980	SS	MS	FULLY SS
EPS/LAF-V900	3'X2'X2'	960X780X1980	SS	MS	FULLY SS
EPS/LAF-V1200	4'X2'X2'	1260X780X1980	SS	MS	FULLY SS
Cleanliness Level	CLASS 100				
Air Velocity	90 FPM ±20				
Particle retention	0.3u & above				
Accessories	Acrylic Door UV Lamp Manometer Gas Inlet Base Stand Power Socket HEPA Filter Pre-Filter Other Standard Features				
Optional Accessories	Ulpa Filter (Optional) Pressure Gauge (Optional)				
Power Supply	230 V AC, 50 Hz				

BIO SAFETY CABINET

A Biological Safety Cabinet (BSC), also known as a Biosafety Cabinet is mainly used for handling pathogenic biological samples or for applications that require a sterile work zone. EPS Biological safety cabinets are enclosed cabinets designed to protect the product, Operator and the surroundings environment when working with contaminated materials and or pathogens. Its primary purpose is bio containment; hence all exhaust air is HEPA filtered. Bio-safety cabinets have several different types according to the required degree of bio-containment.

LCD Controller (optional)

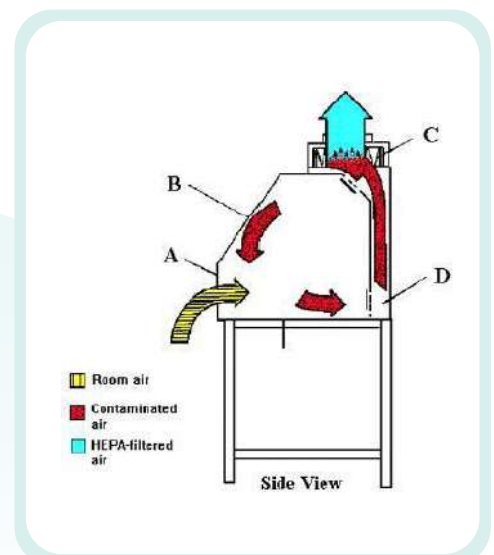


Types of Bio Safety Cabinet

CLASS	RECIRCULATION OF AIR (%)	EXHAUST AIR (%)	EXHAUST ALTERNATIVES	INFLOW VELOCITY (Ft/m)
Class I	0	100	Inside Room/Hard Duct	75ft/m
Class II - A1	70	30	Inside Room/Hard Duct	75ft/m
Class II - A2	70	30	Inside Room/Hard Duct	100ft/m
Class II - B1	30	70	Hard Duct only	100ft/m
Class II - B2	0	100	Hard Duct only	100ft/m
Class III	0	100	Inside Room/Hard Duct	Closed

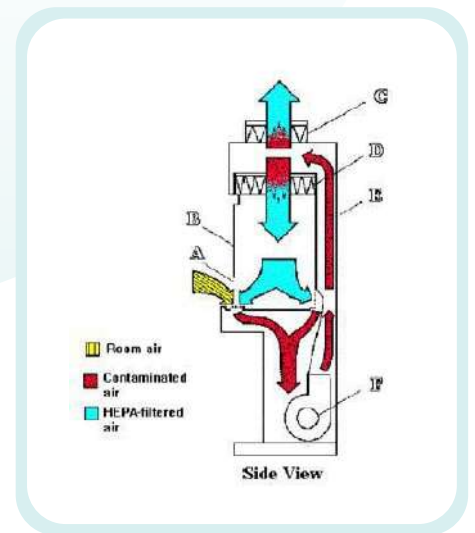
Bio Safety Cabinet Class - I

The Class I biosafety cabinet provides personnel and environmental protection, but no product protection. It has similar turbulent airflow as a chemical fume hood, but has a HEPA filter in the exhaust system to provide containment and environmental protection. This older class of biosafety cabinet is rarely seen in biomedical and microbiological laboratories



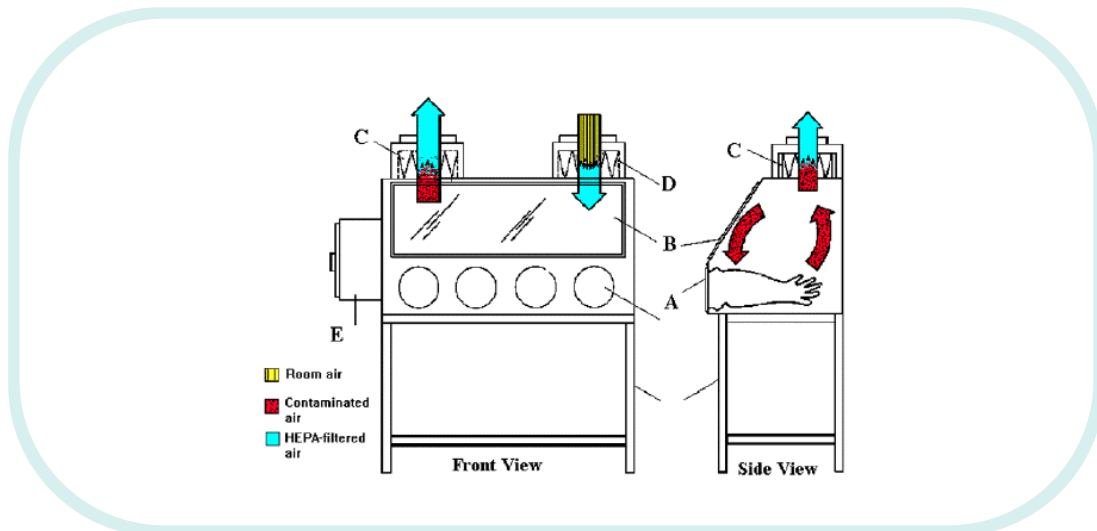
Biosafety Cabinet Class - II

The Class II biosafety cabinet provides protection to the user, the experimental material and the environment. The Class II biological safety cabinet is the type most commonly used in biomedical and microbiological laboratories. Air flow is drawn from the room around the operator into the front grille of the cabinet, which provides personnel protection. In addition, the downward laminar flow of HEPA-filtered air provides protection for experimental material inside the cabinet. Because cabinet air has passed through the exhaust HEPA filter, it is containment-free, providing environmental protection, and may be recirculated back into the laboratory (Class II Type A) or ducted out of the building (Class II Type B).



Biosafety Cabinet Class - III

The Class III biological safety cabinet is most suitable for work with biohazardous agents requiring high containment (biosafety level 3 or 4). The Class III cabinet is completely enclosed; HEPA filter-ventilated cabinet fitted with glove ports and decontamination capabilities for entry and exit of material. It offers the highest degree of personnel and environment protection from infectious aerosols.



Technical Specifications & Ordering Information

CLASS	WORKING DIMENSION IN (FEET)	OVERALL DIMENSION IN (MM)	MOC Inflow Velocity (Ft/m)		BSC Class selection
			INNER	OUTER	
EPS/BSC-1200	4'X2'X2'	1280X780X1960	SS	MS	Class I
EPS/BSC-900	3'X2'X2'	980X780X1960	SS	MS	Class II A1
EPS/BSC-600	2'X2'X2'	680X780X1960	SS	MS	Class II A2
EPS/BSC-1200-S	4'X2'X2'	1280X780X1960	SS	SS	Class II B1
EPS/BSC-900-S	3'X2'X2'	980X780X1960	SS	SS	Class II B2
EPS/BSC-600-S	2'X2'X2'	680X780X1960	SS	SS	Class III

FUME HOOD

EPS Fume hoods are ventilation devices that are designed to limit exposure to hazardous or toxic fumes, vapors or dust. A fume hood is typically a large piece of equipment enclosing five sides of a work area, the bottom of which is most commonly located at a standing work height.

Fume hood exhaust options (Ducting)

Fume Hood Ducting exists two main types ducted and Recirculating (ductless) and principle is the same for both types: air is drawn in from the front (open) side of the cabinet, and either expelled outside the building or made safe through filtration and fed back into the room. To ensure durability, the Fume Hood Duct is constructed with 200mm dia 4mm thick rigid FRP pipe of height 10' with suitable rain hood.

Features

- Metal Construction with inner FRP lining or in complete FRP construction
- Heavy duty dynamically balanced blower assembly provided in the unit
- Counter balanced front sash with toughened glass view panels
- Provided with suitable lighting inside the work chamber.
- Fumes are completely removed from the workplace
- Ergonomic design
- Low mainenane

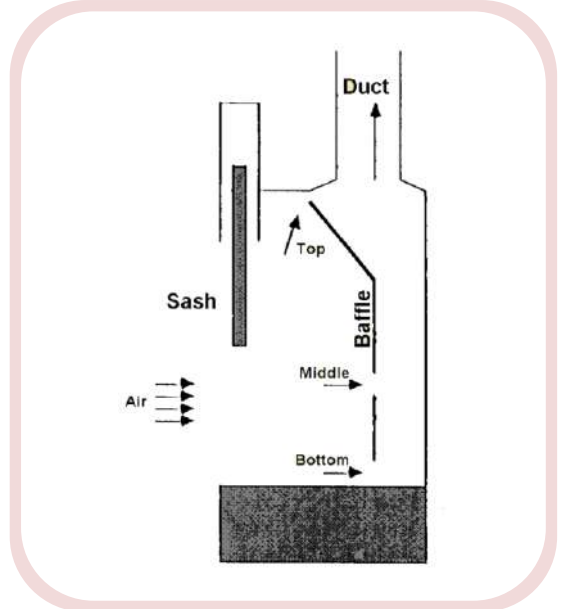
Special Features

- Gas / Air cocks
- FLP Motor & Starter
- Power Socket

Optional Features

- Water Sink
- Inlet and Outlet Flameproof electrical accessories

Technical Specifications & Ordering Information



MODEL	WORKING DIMENSION	OVERALL DIMENSION	TOP CABINET SIZE	SUPPORT STAND
EPS/FH-600	2'X2'X2'	630X700X2100	630X700X1250	630X700X850
EPS/FH-900	3'X2'X2'	930X700X2100	930X700X1250	930X700X850
EPS/FH-1200	4'X2'X2'	1230X700X2100	1230X700X1250	1230X700X850
EPS/FH-1500	5'X2'X2'	1530X700X2100	1530X700X1250	1530X700X850
EPS/FH-1800	6'X2'X2'	1830X700X2100	1830X700X1250	1830X700X850

AUTOCLAVE

EPS autoclaves are manufactured with chamber volumes of 20 liters to 250 liters that accommodate two and three drums respectively. The vertically designed chamber maximizes space utilization, while microprocessor control system enables comfortable working all the time you operate the machine. Also provides guaranty of safe and efficient sterilization even in confined spaces.

Autoclave Advantages



- EPS fully Automatic Vertical Autoclaves are ideal for all critical applications
- Digital temperature indicator cum controller linked to a preset (15 min) timer
- PT 100 sensor enabling precise monitoring
- Low water level cut off
- Easy operation and low maintenance
- Pressure is viewed with the analog dial bar
- Gaskets are made up of silicon rubber to maintain high temperature 121°C
- Power Supply 220/440Volts



Applications

Laboratory autoclaves are ideal for all applications and general purpose sterilization jobs

- Requiring routine total destruction of all living organism
- Ideal for Doctors, Primary Health Centers and also as a stand by unit

Technical Specifications & Ordering Information

MODEL	EPS/VA-22	EPS/VA-35	EPS/VA-53	EPS/VA-75	EPS/VA-113	EPS/VA-175
Internal Tank Capacity	22 Liter	35 Liter	53 Liter	75 Liter	113 Liter	175 Liter
Working Chamber (mm)	250x450	300x500	350x550	400x600	450x710	550x750
Working Pressure	15 psi - 17 psi (Jack Type SS Lid to maintain pressure)					
Sterilizing Temperature	121°C - 134°C					
Heat average	<=±1°C					
Outer Chamber	304 Stainless Steel (SS)					
Inner Chamber	304 Stainless Steel (SS)					
Door Locking Type	Wing Nut (Foot lifted with safety and interlock device)					
Water Filling & Removal	Manual					

Portable Autoclave

MODEL	EPS/PA-6	EPS/PA-10	EPS/PA-15	EPS/PA-20
Internal Tank Capacity	6 Liter	10 Liter	15 Liter	20 Liter
Working Pressure/Temp	15 psi - 17 psi / 121°C			

HUMIDITY/STABILITY CHAMBER

EPS Humidity/Stability Chambers are widely used for controlling and monitoring the humidity level of the testing process. Our products are fabricated using the optical raw material procured from the reliable vendors of the market. The standard models are available from 100 liters to 5000 liters capacities.



Applications

- Drug storage in pharmaceutical industry
- Circuit board testing in the electronics industry
- Paper testing in the Paper industry

Construction

- Inner Chamber made up Stainless Steel (SS - 304)
- Outer Chamber made up of Mild Steel (MS) powder coated for corrosive resistance
- Trays are made up of SS Material
- Double walled construction with mineral or glass wool insulation
- Shelves : Stainless steel Shelves removable

Salient Features

- Temperature & Humidity Control :- Microprocessor Digital Controller
- Temperature range from 10°C to 60°C & Humidity range from 30% to 95%
- Machine filled with mineral or glass wool insulation to eliminate void pockets
- Adjustable trays
- Overload cut off relay for compressor
- Rounded inner chamber for easy cleaning
- Powerful fan motor for forced air circulation to maintain temperature & humidity

Optional

- Full Chamber Construction with Stainless Steel (Inner/Outer)
- Validation protocol with IQ,OQ,PQ Documentation.

Technical Specifications & Ordering Information

	EPS/HC-200	EPS/HC-270	EPS/HC-350	EPS/HC-430	EPS/HC-630	EPS/HC-800
HUMIDITY						
STABILITY						
Dimension (mm)	550x550x710	600x600x710	650x650x810	650x650x950	710x710x1250	800x800x1250
Volume (Liter)	200	270	350	430	630	800
Type	Vertical, Floor Type					
Temperature Range	±10°C to ±55°C					
Humidity Range	35% to 95% RH					
Sensor for	Pt100, RTD, Class-A					
Sensor for Humidity	Capacitive type Rh sensor					
Humidity System	Direct detective method					
Controller	Digital PID humidity cum temp. controller with resolution of 0.1°C & 0.1%					
Uniformity	±1°C & ±3% Rh					
Wet & Dry Heaters	SS industrial heaters					
Temperature	Forced air circulation with fan motor					
Humidity unit	Inner Streaming unit, water line & controlling unit will be outside					
Outer	MS with powder coated					
Inner	SS 304, duly polished					
Insulation	Super fine glass mineral wool					
Door	Double walled insulated & interior lined with SS304, silicon gaskets for leak proof					
Window	5mm thick vacuum glass window with illumination lamp					
Trays	Adjustable type SS mesh tray					
Compressor	Hermetically sealed single stage Emerson Copeland make compressor					
Refrigerant	Environmental/CFC free					
Condenser	Air Cooled Fin & Tube type					
Power Supply	230v, Single phase, 50Hz					

BACTERIOLOGICAL INCUBATOR

EPS Bacteriological Incubator is used for storage of bacteria plate and bacterial culture growth at 37°C. Standard models come in small size as 50 liters capacity and large size as 340 liters and we also customize bacterial incubators on demand. Each unit is fitted with digital temperature controller for excellent accuracy and reliability.

Temperature

- Controlled with digital PID Temperature controller
- Noise-less fan is used for air circulation for uniform incubation inside the chamber

Construction

- Inside SS 304 with mirror polish & outside mild steel duly powder coated.
- Double walled construction with insulation of glass wool for efficient thermal loss
- Shelves are made up of stainless steel and can be easily adjusted inside the chamber
- Doors are double walled & fitted on heavy hinges
- Sturdy handle provides comfortable opening and closing
- Doors open 180° angle in order to provide enough access to the heating chamber

Application

- Research laboratories, engineering lab, pharmaceutical lab, cosmetic industry, chemical lab, clinical lab.
- Microbiological determination, pharmaceutical stability assays, food processing, QC.

Technical Specifications & Ordering Information

MODEL	EPS/INC-50	EPS/INC-100	EPS/INC-150	EPS/INC-200	EPS/INC-250
Inner Chamber Capacity	60 Liter	95 Liter	125 Liter	224 Liter	336 Liter
Inner Chamber Size (mm)	350x350x350	450x450x450	450x450x605	605x605x605	605x605x900
Load	250W	500W	1.0KW	1.5KW	2KW
Temperature Range	5°C above ambient to 80°C maximum				
Temperature Accuracy	+/-1°C				
Controls	Digital PID Controller				
Temp Display	LED Display				
Outer Chamber	Mild Steel (304 stainless Steel - optional)				
Inner Chamber	304 Stainless steel				
Sensor	"RTD" type sensor				
Shelves	2-3 Stainless steel shelves (Removable)				



BOD INCUBATOR

EPS BOD Incubators are widely used in microbiology laboratories for the applications that include cell culture and fungal growth, BOD test, fermentation crop and physiology and various pharmaceutical tests etc. It is also known as low temperature incubator or refrigerated incubator because it is made with temperature range between 5°C to 60°C or with cooling and heating functions under one unit.

Incubators to provide a condition for optimal growth of microbiology cultures, biological labs for the preservation of vaccines, serological and complement fixation tests, General low temperature uses in physical/chemical labs, R&D centre, quality control laboratory, general laboratories of industries, pharmaceuticals, chemicals, petrochemicals, oil & gas, cement, pulp and paper, fertilizers, defense, railways, paint etc...

Construction

- Inner chamber made up Stainless Steel SS-304
- Outer chamber made up of Mild Steel (MS powder) coated for corrosive resistance
- Double walled construction with Super fine Glass Mineral wool insulation
- Trays are made up of SS-304 Material
- Removable Stainless Steel Shelves
- Attractive door profile with good looking

Technical Specifications & Ordering Information

MODEL	EPS/BOD-120	EPS/BOD-180	EPS/BOD-240	EPS/BOD-350	EPS/BOD-430
Dimension LxDxH(mm)	450x415x610	500x415x800	570x550x870	650x550x900	700x650x900
Volume (Width)	112 L	168 L	280 L	335 L	420 L
Capacity (CU.FT)	4	6	10	12	15
Temp Range	5°C to 60°C				
Temp Accuracy	+/-1°C				
Temp Controller	Microprocessor based autotune PID temperature controller				
Sensor	PT 100 sensor is used for sensing the temperature				
Refrigeration	CFC free hermetically sealed compressor for better cooling with R134A refrigerant				
Heating System	High quality tubular air heaters are used for better heating				
Air Circulation	Motorized blower system at the back side for uniform air circulation in chamber				
Inner door	Clear Acrylic with heavy thickness				
Illumination	Fluorescent or LED light				
Power Supply	230V AC, 50hz				



HOT AIR OVEN

EPS Hot Air Oven offer continuous temperature range 5°C above ambient to 250°C with accuracy of $\pm 1^\circ\text{C}$ and Standard models are available from 22 liters to 300 liters volume; however, we can also design and manufacture hot air ovens meeting as per the customer requirements.

Temperature

- Controlled with digital control (PID controller) for uniform incubation inside the chamber
- Noise-less fan is used for air circulation

Construction

- Chamber made up of MS powder coated corrosive resistance
- Double walled construction with insulation of glass wool for efficient thermal loss
- Shelves are made of stainless steel can be easily adjusted inside the chamber

Doors

- Doors are double walled, made of MS steel (stainless steel optional)
- Insulated with mineral glass wool, fitted on heavy hinges
- Sturdy handle provides comfortable opening and closing
- Doors open 180° angle in order to provide enough access to the heating chamber

Heating Elements

- For efficient heating, our hot air ovens are fitted with branded heating elements, nickel/chrome plated nichrome wire, kept inside the beads and placed at the bottom of both sides of the chamber.



Technical Specifications & Ordering Information

MODEL	EPS/HAO-60	EPS/HAO-90	EPS/HAO-120	EPS/HAO-220	EPS/HAO-250
Inner Chamber Capacity	60 Liter	95 Liter	125 Liter	224 Liter	250 Liter
Inner Chamber Size (mm)	350x350x350	450x450x450	450x450x605	605x605x605	605x605x700
Load	1.0KW	1.5KW	2.0KW	2.5KW	3.0KW
Temperature Range	5°C above ambient to 250°C maximum				
Temperature Accuracy	$\pm 2^\circ\text{C}$				
Temp Display	LED Display				
Outer Chamber	Mild Steel (304 stainless steel - optional)				
Inner Chamber	304 stainless steel				
Sensor	"J" type sensor				
Shelves	2-3 stainless steel shelves (Removable)				
Air Circulation	Forced air circulation				

MUFFLE FURNACE

EPS Muffle Furnace offer temperature range starts 900°C, 1100°C, 1200°C, 1300°C & up to 1500°C and temperature control options to meet your application needs. Embedded or open heating elements designed to keep samples safe while maintaining reliable temperature uniformity.

Furnaces in laboratory and industrial settings are used every day for a wide variety of simple and technical applications. Choose from a wide offering to accommodate your applications needs which may include.

- Metal treatment
- Ashing
- Water treatment
- Pottery Designs with safety in mind

Temperature

- Controlled with automatic Digital temperature indicating controller with Cr/A1. Thermocouple

Construction

- Outer Chamber made up of thick cold rolled mild steel with powder coated for corrosive resistance
- Chamber is surrounded by ceramic fibre blankets on all the four sides and the rear to reduce heat losses to a minimum.

Doors

- Rectangular in shape placed horizontally with opening in the front
- Sturdy handle provides comfortable opening and closing
- Doors open 180° in order to provide enough access to the heating chamber



Technical Specifications & Ordering Information

MODEL	EPS/MF-100	EPS/MF-125	EPS/MF-150	EPS/MF-200	EPS/MF-300
Inner Chamber Size (mm)	100x100x250	125x125x250	150x150x300	200x200x300	300x300x300
Load	3.5KW	4.0KW	4.5KW	5.0KW	6.0KW
Temperature Range	900°C, 1000°C, 1100°C, 1200°C, 1300°C up to 1500°C				
Temperature Accuracy	+/-2°C				
Input Power Supply	230 Volts AC, Single phase				

WATER BATH

Water Baths are designed & manufactured to comply requirements of industries. Water baths are suitable for various sizes of flasks supplied with concentric rings (Holes) and racks (Serological). Water baths are fully double wall construction and the gap between the walls insulate with special grade glass wool to eliminate the heat loss to minimum. U' shaped heaters are used.



WATER BATH (HOLES)

Technical Specifications & Ordering Information

MODEL	EPS/WB-R6	EPS/WB-R9	EPS/WB-R12
Dimension (mm)	300x250x105	300x300x105	405x300x105
No of Holes (Width)	6	9	12
Volume (Liters)	9	12	15
MOC	Outer :- Mild Steel (Powder coated), Inner :- Stainless steel		
Control	Thermostat/Microprocessor Digital controller (optional)		
Heaters	'U' Shaped heater		
Power	1.5 kw		
Temperature	Ambient +5°C to 100°C		

WATER BATH (SEROLOGICAL)

EPS Serological Water Baths are fully double wall construction and the gap between the walls insulated with special grade glass wool to eliminate the heat loss to minimum. U' Shaped heaters are used.



Technical Specifications & Ordering Information

MODEL	EPS/WB-S2	EPS/WB-S4	EPS/WB-S6	EPS/WB-S8
Dimension (mm)	300x250x175	350x300x175	455x300x175	605x300x175
Volume (Liters)	15	20	25	32
MOC	Outer :- Mild Steel (Powder coated), Inner :- Stainless steel			
Control	Thermostat/Microprocessor Digital controller (optional)			
Heaters	'U' Shaped heater			
Power	1.5 kw			2.0 kw
Temperature	Ambient ±5°C to 100°C			

ULTRA LOW TEMPERATURE DEEP FREEZER

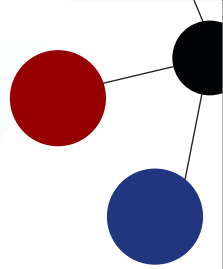
A deep freezer is a specialized appliance designed for ultra low temperature storage typically below -20°C , used to store items for extended periods. Unlike a regular refrigerator, it maintains a consistently lower temperature.



Technical Specifications & Ordering Information

- Temp. Range : -40°C to -80°C Temperature Controller:
- Microprocessor based controller
- Sensor : PT 100 sensor
- Resolution : 0.1°
- Audio Alarm for high and low
- Temperature. Door ajar alarm
- Power failure alarm
- Built in cascade refrigeration system
- Heavy duty Castor wheels for easy movement
- Control of temperature within 3°C of set temperature
- Duly Polished 304 Grade Stainless Steel inner chamber
- No of Trays : 3/4 Nos - Adjustable
- Outer made of Mild Steel with powder coated
- Fin & Tube type air - cooled condensor
- Double walled main door (interior lined with stainless steel) with sub doors
- Sub doors made of stainless steel
- Triple Gasket system for leak proof
- Heavy duty hinges with toggle type
- Polyurethane Insulation (PUF)
- Supply : 230V, 50Hz
- Single phase

MODEL	EPS/DF-105	EPS/DF-175	EPS/DF-275	EPS/DF-330	EPS/DF-400	EPS/DF-500
Volume	100 L	170 L	270 L	330 L	400 L	500 L
Dimension (mm)	350x400x700	430x450x900	500x500x1100	550x550x1100	600x600x1100	700x650x1100
Type	Vertical, Floor Type					
Power Supply	230V, Single Phase 50Hz					



We are privileged to serve you
with the following products



Binocular Microscope



Inverted Microscope



Air Sampler



Elisa Reader/Washer



Biochemistry Analyzer



Smart Centrifuge



Cooling Centrifuge



Magnetic Stirrer



Water Purification System



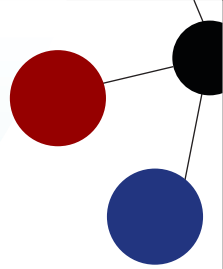
Homogenizer



Tube Rollers



Vortex Mixture



Ultra Sonicator



Probe Sonicator



ICE Flakers



Rotary Microtome



Rotary Evaporator



pH/EC/TDS Meters



Weighing Balance



Weights-Class F1/E1/E2



Lyophilizer-(80/40)°C



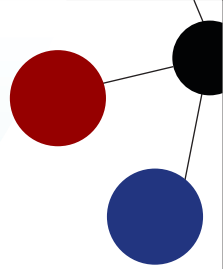
Gradient PCR Machine



Co2 Incubator



Vacuum-Oven/Pump



UV/VIS Spectrophotometer



FTIR Spectroscopy



Deep Freezer-(80/40/20)°C



Lab Freezers



Horizontal Autoclave



ETO Sterilizers



Water Distillation Unit



Pipettes



Lab Consumables



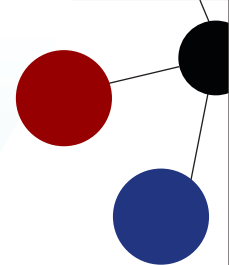
Glassware/Chemicals



Media Kits



Filtration Section



Air Generator



BOD



COD Analyzer



Gas chromatography



HPLC



Hydro Thermal Autoclave



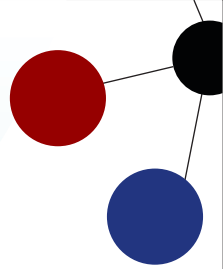
Karl Fischer



Lab Design Construction



Melting Point Apparatus



Oil Bath



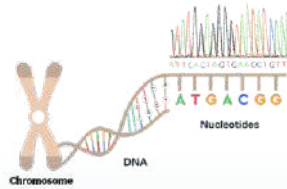
Over Head Stirrer



Peristaltic Pump



Recirculating Water Chiller



Sequencing



Thermal Shaker

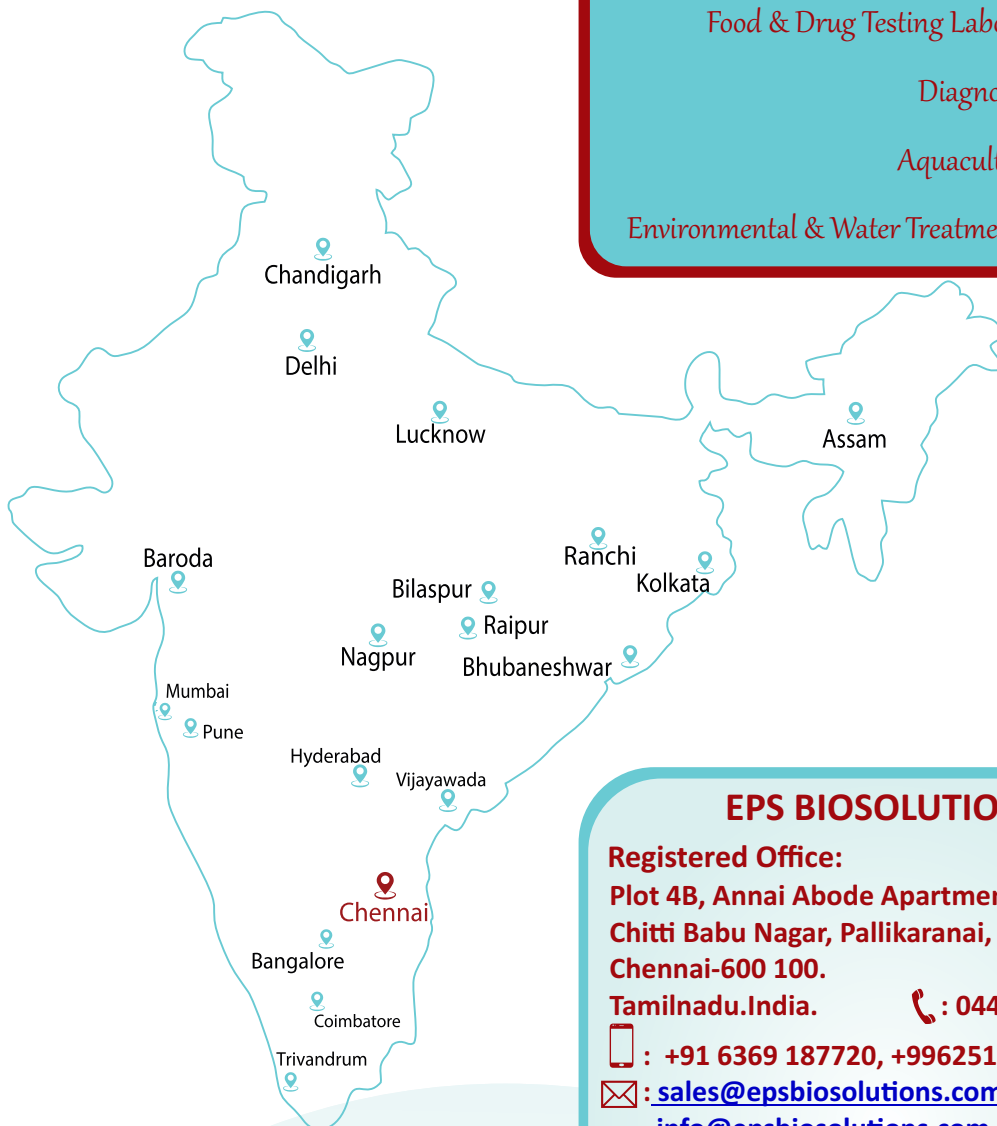


Vacuum Aspiration



Viscometer

Our Dealers Network



- Educational Institutions
- Pharma Industries
- Research Organizations
- Food & Drug Testing Laboratories
- Diagnostic labs
- Aquaculture labs
- Environmental & Water Treatment Units

Authorized Dealer / Distributor

EPS BIOSOLUTIONS

Registered Office:
 Plot 4B, Annai Abode Apartment, 1st Cross St,
 Chitti Babu Nagar, Pallikaranai,
 Chennai-600 100.
 Tamilnadu.India. ☎ : 044-4207 2939

☎ : +91 6369 187720, +9962516601

✉ : sales@epsbiosolutions.com | info@epsbiosolutions.com

🌐 : www.epsbiosolutions.com

Factory:
 Plot NO. 201B, Ram Nagar South
 9th Main Road, Ram Nagar,
 Pallikaranai, Chennai-600 100.
 Tamilnadu. India.